



# BI-METAL LUGS

SPECIFICATION SHEET: #UTBL.01

## SPECIFICATIONS:

**Materials:** Copper/Aluminium EC Grade

**Content:** Aluminium Copper

**Purity:** 99.6% 99.95%

**Oxygen Presence:** 0.001% = 10ppm (parts per million)

**Temperature Range:** -55° - 155°C

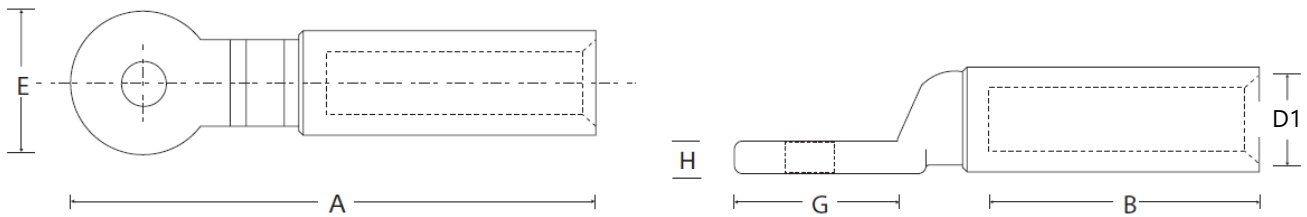
**Final Metal State:** Fully annealed

## Standards and Compliance:

AS/NZ 4325:1; EN 60998-1:2004

Heat Cycling test to AS/NZS 4325.1 and IEC 61238-1-1

Mechanical Pulling test to AS-NZS 4325.1 and IEC 61238-1-1



Part Number	Cable Size	Stud Size	Dimensions (mm)						A/F Hex Die (mm)
			A	B	E	G	H	D1	
UBL 16-8	16mm <sup>2</sup>	8	75	32	20	24	4.5	5.5	9
UTBL 16-10	16mm <sup>2</sup>	8	75	32	20	24	4.5	5.5	9
UBL 25-8	25mm <sup>2</sup>	8	75	32	20	24	4.5	7.5	9
UTBL 25-10	25mm <sup>2</sup>	10	75	32	20	24	4.5	7.5	9
UTBL 25-12	25mm <sup>2</sup>	12	75	32	20	24	4.5	7.5	9
UTBL 35-8	35mm <sup>2</sup>	8	75	32	20	24	4.5	8.5	9
UTBL 35-10	35mm <sup>2</sup>	10	75	32	20	24	4.5	8.5	9
UTBL 35-12	35mm <sup>2</sup>	12	75	32	20	24	4.5	8.5	9



Part Number	Cable Size	Stud Size	Dimensions (mm)						A/F Hex Die (mm)
			A	B	E	G	H	D1	
UTBL 50-8	50mm <sup>2</sup>	8	75	32	24	24	4.5	9.5	13.2
UTBL 50-10	50mm <sup>2</sup>	10	75	32	24	24	4.5	9.5	13.2
UTBL 50-12	50mm <sup>2</sup>	12	75	32	24	24	4.5	9.5	13.2
UTBL 70-8	70mm <sup>2</sup>	8	75	32	24	24	4.5	11.5	13.2
UTBL 70-10	70mm <sup>2</sup>	10	75	32	24	24	4.5	11.5	13.2
UTBL 70-12	70mm <sup>2</sup>	12	75	32	24	24	4.5	11.5	13.2
UTBL 70-16	70mm <sup>2</sup>	16	75	32	24	24	4.5	11.5	13.2
UTBL 95-8	95mm <sup>2</sup>	8	115	60	24	35	6	13.5	17.3
UTBL 95-10	95mm <sup>2</sup>	10	115	60	24	35	6	13.5	17.3
UTBL 95-12	95mm <sup>2</sup>	12	115	60	24	35	6	13.5	17.3
UTBL 95-16	95mm <sup>2</sup>	16	115	60	24	35	6	13.5	17.3
UTBL 120-8	120mm <sup>2</sup>	8	115	60	30	35	6	15.5	17.3
UTBL 120-10	120mm <sup>2</sup>	10	115	60	30	35	6	15.5	17.3
UTBL 120-12	120mm <sup>2</sup>	12	115	60	30	35	6	15.5	17.3
UTBL 120-16	120mm <sup>2</sup>	16	115	60	30	35	6	15.5	17.3
UTBL 150-8	150mm <sup>2</sup>	8	123	60	35	39	7	16.5	22.0
UTBL 150-10	150mm <sup>2</sup>	10	123	60	35	39	7	16.5	22.0
UTBL 150-12	150mm <sup>2</sup>	12	123	60	35	39	7	16.5	22.0
UTBL 150-16	150mm <sup>2</sup>	16	123	60	35	39	7	16.5	22.0
UTBL 185-8	185mm <sup>2</sup>	8	123	60	35	39	7	18.5	22.0
UTBL 185-10	185mm <sup>2</sup>	10	123	60	35	39	7	18.5	22.0
UTBL 185-12	185mm <sup>2</sup>	12	123	60	35	39	7	18.5	22.0
UTBL 185-16	185mm <sup>2</sup>	16	123	60	35	39	7	18.5	22.0
UTBL 240-0	240mm <sup>2</sup>	blank	135	60	35	45	7	22	28.4
UTBL 240-10	240mm <sup>2</sup>	10	135	60	35	45	7	22	28.4
UTBL 240-12	240mm <sup>2</sup>	12	135	60	35	45	7	22	28.4
UTBL 240-16	240mm <sup>2</sup>	16	135	60	35	45	7	22	28.4



Part Number	Cable Size	Stud Size	Dimensions (mm)						A/F Hex Die (mm)
			A	B	E	G	H	D1	
UTBL 300-0	300mm <sup>2</sup>	blank	135	60	35	45	7	23.5	28.4
UTBL 300-10	300mm <sup>2</sup>	10	135	60	35	45	7	23.5	28.4
UTBL 300-12	300mm <sup>2</sup>	12	135	60	35	45	7	23.5	28.4
UTBL 300-16	300mm <sup>2</sup>	16	135	60	35	45	7	23.5	28.4
UTBL 400-0	400mm <sup>2</sup>	blank	165	70	50	50	10	26.5	39.0
UTBL 400-10	400mm <sup>2</sup>	10	165	70	50	50	10	26.5	39.0
UTBL 400-12	400mm <sup>2</sup>	12	165	70	50	50	10	26.5	39.0
UTBL 400-16	400mm <sup>2</sup>	16	165	70	50	50	10	26.5	39.0
UTBL 500-0	500mm <sup>2</sup>	blank	165	70	50	50	10	30	39.0
UTBL 500-10	500mm <sup>2</sup>	10	165	70	50	50	10	30	39.0
UTBL 500-12	500mm <sup>2</sup>	12	165	70	50	50	10	30	39.0
UTBL 500-16	500mm <sup>2</sup>	16	165	70	50	50	10	30	39.0
UTBL 630-0	630mm <sup>2</sup>	blank	185	70	50	50	10	34	43.2
UTBL 630-10	630mm <sup>2</sup>	10	185	70	50	50	10	34	43.2
UTBL 630-12	630mm <sup>2</sup>	12	185	70	50	50	10	34	43.2
UTBL 630-16	630mm <sup>2</sup>	16	185	70	50	50	10	34	43.2

