



COPPER REDUCING LINKS

SPECIFICATION SHEET: #UTCRL.01

SPECIFICATIONS:

Materials: Copper

Industrial Term for Material:

Oxygen free high conductivity copper

Treatment: Electroplated Tin

Content: Copper Tin (Surface)

Purity: 99.95% 99.99%

Oxygen Presence: 0.001% = 10ppm (parts per million)

Temperature Range: -55° - 155°C

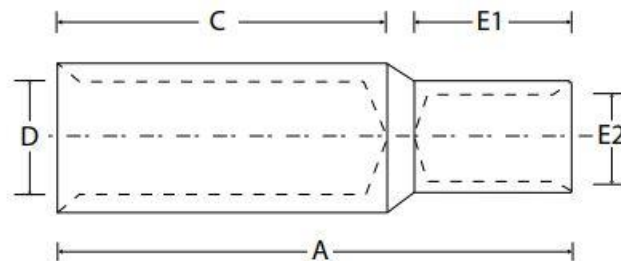
Final Metal State: Fully annealed

Standards and Compliance:

AS/NZ 4325:1; EN 60998-1:2004

Heat Cycling test to AS/NZS 4325.1 and IEC 61238-1-1

Mechanical Pulling test to AS-NZS 4325.1 and IEC 61238-1-1



| Part Number | Cable Size | | Dimensions | | | | | A/F Hex Die (mm) | |
|-------------|-------------------|-------------------|------------|----|----|-----|-----|------------------|-----------|
| | Large End | Small End | A | C | E1 | D | E2 | Large End | Small End |
| UTCRL10-6 | 10mm ² | 6mm ² | 30 | 10 | 10 | 4.7 | 3.8 | 5.7 | 4.4 |
| UTCRL16-6 | 16mm ² | 6mm ² | 40 | 19 | 10 | 5.5 | 3.8 | 6.3 | 4.4 |
| UTCRL16-10 | 16mm ² | 10mm ² | 40 | 19 | 12 | 5.5 | 4.7 | 6.3 | 5.7 |
| UTCRL25-6 | 25mm ² | 6mm ² | 40 | 21 | 10 | 7.1 | 3.8 | 7.7 | 4.4 |
| UTCRL25-10 | 25mm ² | 10mm ² | 5 | 21 | 19 | 7.1 | 5.5 | 7.7 | 6.3 |
| UTCRL25-16 | 25mm ² | 16mm ² | 45 | 21 | 19 | 7.1 | 5.5 | 7.7 | 7.7 |
| UTCRL35-10 | 35mm ² | 10mm ² | 55 | 21 | 12 | 8.2 | 4.7 | 9.2 | 5.7 |
| UTCRL35-16 | 35mm ² | 16mm ² | 60 | 21 | 21 | 8.2 | 7.1 | 9.2 | 7.7 |



| Part Number | Cable Size | | Dimensions | | | | | A/F Hex Die (mm) | |
|--------------|--------------------|--------------------|------------|----|----|------|------|------------------|-----------|
| | Large End | Small End | A | C | E1 | D | E2 | Large End | Small End |
| UTCRL35-25 | 35mm ² | 25mm ² | 60 | 21 | 21 | 8.2 | 7.1 | 9.2 | 7.7 |
| UTCRL50-10 | 50mm ² | 10mm ² | 50 | 22 | 12 | 9.5 | 4.7 | 10.4 | 5.7 |
| UTCRL50-16 | 50mm ² | 16mm ² | 55 | 22 | 19 | 9.5 | 5.5 | 10.4 | 6.3 |
| UTCRL50-25 | 50mm ² | 25mm ² | 55 | 22 | 21 | 9.5 | 7.1 | 10.4 | 7.7 |
| UTCRL50-35 | 50mm ² | 35mm ² | 60 | 22 | 21 | 9.5 | 8.2 | 10.4 | 9.2 |
| UTCRL70-16 | 70mm ² | 16mm ² | 60 | 24 | 19 | 11.2 | 5.5 | 11.5 | 6.3 |
| UTCRL70-25 | 70mm ² | 25mm ² | 60 | 24 | 21 | 11.2 | 7.1 | 11.5 | 7.7 |
| UTCRL70-35 | 70mm ² | 35mm ² | 60 | 24 | 21 | 11.2 | 8.2 | 11.5 | 9.2 |
| UTCRL70-50 | 70mm ² | 50mm ² | 60 | 24 | 22 | 11.2 | 9.5 | 11.5 | 10.4 |
| UTCRL95-16 | 95mm ² | 16mm ² | 65 | 27 | 19 | 13.4 | 5.5 | 14.2 | 6.3 |
| UTCRL95-25 | 95mm ² | 25mm ² | 65 | 27 | 21 | 13.4 | 7.1 | 14.2 | 7.7 |
| UTCRL95-35 | 95mm ² | 35mm ² | 65 | 27 | 21 | 13.4 | 8.2 | 14.2 | 9.2 |
| UTCRL95-50 | 95mm ² | 50mm ² | 70 | 27 | 22 | 13.4 | 9.5 | 14.2 | 10.4 |
| UTCRL95-70 | 95mm ² | 70mm ² | 70 | 27 | 24 | 13.4 | 11.2 | 14.2 | 11.5 |
| UTCRL120-16 | 120mm ² | 16mm ² | 70 | 30 | 21 | 15.6 | 5.5 | 16.5 | 6.3 |
| UTCRL120-25 | 120mm ² | 25mm ² | 70 | 30 | 21 | 15.6 | 7.1 | 16.5 | 7.7 |
| UTCRL120-35 | 120mm ² | 35mm ² | 70 | 30 | 21 | 15.6 | 8.2 | 16.5 | 9.2 |
| UTCRL120-50 | 120mm ² | 50mm ² | 70 | 30 | 22 | 15.6 | 9.5 | 16.5 | 10.4 |
| UTCRL120-70 | 120mm ² | 70mm ² | 75 | 30 | 24 | 15.6 | 11.2 | 16.5 | 11.5 |
| UTCRL120-95 | 120mm ² | 95mm ² | 75 | 30 | 27 | 15.6 | 13.4 | 16.5 | 14.2 |
| UTCRL150-16 | 150mm ² | 16mm ² | 70 | 30 | 21 | 16.7 | 5.5 | 18.3 | 6.3 |
| UTCRL150-25 | 150mm ² | 25mm ² | 70 | 30 | 21 | 16.7 | 7.1 | 18.3 | 7.7 |
| UTCRL150-35 | 150mm ² | 35mm ² | 70 | 30 | 21 | 16.7 | 8.2 | 18.3 | 9.2 |
| UTCRL150-50 | 150mm ² | 50mm ² | 70 | 30 | 22 | 16.7 | 9.5 | 18.3 | 10.4 |
| UTCRL150-70 | 150mm ² | 70mm ² | 75 | 30 | 24 | 16.7 | 11.2 | 18.3 | 11.5 |
| UTCRL150-95 | 150mm ² | 95mm ² | 80 | 30 | 27 | 16.7 | 13.4 | 18.3 | 14.2 |
| UTCRL150-120 | 150mm ² | 120mm ² | 80 | 30 | 30 | 16.7 | 15.6 | 18.3 | 16.5 |
| UTCRL185-25 | 185mm ² | 25mm ² | 75 | 32 | 22 | 18.4 | 7.1 | 20 | 7.7 |
| UTCRL185-35 | 185mm ² | 35mm ² | 75 | 32 | 22 | 18.4 | 8.2 | 20 | 9.2 |
| UTCRL185-50 | 185mm ² | 50mm ² | 75 | 32 | 22 | 18.4 | 9.5 | 20 | 10.4 |
| UTCRL185-70 | 185mm ² | 70mm ² | 75 | 32 | 24 | 18.4 | 11.2 | 20 | 11.5 |
| UTCRL185-95 | 185mm ² | 95mm ² | 80 | 32 | 27 | 18.4 | 13.4 | 20 | 14.2 |
| UTCRL185-120 | 185mm ² | 120mm ² | 85 | 32 | 30 | 18.4 | 15.6 | 20 | 16.5 |
| UTCRL185-150 | 185mm ² | 150mm ² | 85 | 32 | 30 | 18.4 | 16.7 | 20 | 18.3 |
| UTCRL240-50 | 240mm ² | 50mm ² | 85 | 38 | 22 | 21.2 | 9.5 | 23.1 | 10.4 |
| UTCRL240-70 | 240mm ² | 70mm ² | 85 | 38 | 24 | 21.2 | 11.2 | 23.1 | 11.5 |



| Part Number | Cable Size | | Dimensions | | | | | A/F Hex Die (mm) | |
|--------------|--------------------|--------------------|------------|----|----|------|------|------------------|-----------|
| | Large End | Small End | A | C | E1 | D | E2 | Large End | Small End |
| UTCRL240-95 | 240mm ² | 95mm ² | 85 | 38 | 27 | 21.2 | 13.4 | 23.1 | 14.2 |
| UTCRL240-120 | 240mm ² | 120mm ² | 90 | 38 | 30 | 21.2 | 15.6 | 23.1 | 16.5 |
| UTCRL240-150 | 240mm ² | 150mm ² | 90 | 38 | 30 | 21.2 | 16.7 | 23.1 | 18.3 |
| UTCRL240-185 | 240mm ² | 185mm ² | 95 | 38 | 32 | 21.2 | 18.4 | 23.1 | 20 |
| UTCRL300-95 | 300mm ² | 95mm ² | 95 | 42 | 27 | 23.5 | 13.4 | 26 | 14.2 |
| UTCRL300-120 | 300mm ² | 120mm ² | 95 | 42 | 30 | 23.5 | 15.6 | 26 | 16.5 |
| UTCRL300-150 | 300mm ² | 150mm ² | 95 | 42 | 30 | 23.5 | 16.7 | 26 | 18.3 |
| UTCRL300-185 | 300mm ² | 185mm ² | 100 | 42 | 32 | 23.5 | 18.4 | 26 | 20 |
| UTCRL300-240 | 300mm ² | 240mm ² | 105 | 42 | 38 | 26.8 | 21.2 | 26 | 23.1 |
| UTCRL400-95 | 400mm ² | 95mm ² | 105 | 55 | 27 | 26.8 | 15.6 | 28.1 | 14.2 |
| UTCRL400-120 | 400mm ² | 120mm ² | 105 | 55 | 30 | 26.8 | 15 | 28.1 | 16.5 |
| UTCRL400-150 | 400mm ² | 150mm ² | 110 | 55 | 30 | 26.8 | 16.7 | 28.1 | 18.3 |
| UTCRL400-185 | 400mm ² | 185mm ² | 110 | 55 | 32 | 26.8 | 18.4 | 28.1 | 20 |
| UTCRL400-240 | 400mm ² | 240mm ² | 125 | 55 | 38 | 26.8 | 21.2 | 28.1 | 23.1 |
| UTCRL400-300 | 400mm ² | 300mm ² | 125 | 55 | 42 | 26.8 | 23.5 | 28.1 | 26 |
| UTCRL500-120 | 500mm ² | 120mm ² | 110 | 55 | 30 | 30 | 15.6 | 31 | 16.5 |
| UTCRL500-150 | 500mm ² | 150mm ² | 110 | 55 | 30 | 30 | 16.7 | 31 | 18.3 |
| UTCRL500-185 | 500mm ² | 185mm ² | 115 | 55 | 32 | 30 | 18.4 | 31 | 20 |
| UTCRL500-240 | 500mm ² | 240mm ² | 120 | 55 | 38 | 30 | 21.2 | 31 | 23.1 |
| UTCRL500-300 | 500mm ² | 300mm ² | 125 | 55 | 42 | 30 | 23.5 | 31 | 26 |
| UTCRL500-400 | 500mm ² | 400mm ² | 140 | 55 | 55 | 30 | 26.8 | 31 | 28.1 |
| UTCRL630-150 | 630mm ² | 150mm ² | 115 | 56 | 30 | 34 | 16.7 | 37 | 18.3 |
| UTCRL630-185 | 630mm ² | 185mm ² | 115 | 56 | 32 | 34 | 18.4 | 37 | 20 |
| UTCRL630-240 | 630mm ² | 240mm ² | 120 | 56 | 38 | 34 | 21.2 | 37 | 23.1 |
| UTCRL630-300 | 630mm ² | 300mm ² | 125 | 56 | 42 | 34 | 23.5 | 37 | 26 |
| UTCRL630-400 | 630mm ² | 400mm ² | 140 | 56 | 55 | 34 | 26.8 | 37 | 28.1 |
| UTCRL630-500 | 630mm ² | 500mm ² | 140 | 56 | 55 | 34 | 30 | 37 | 31 |

