

# SHEARHEAD CONNECTOR LUGS 36KV



## SPECIFICATIONS:

### Materials

Copper

### Industrial Term for Material

Oxygen Free High Conductivity Copper

### Treatment

Electroplated Tin

### Content Purity

Copper 99.95%

Tin (Surface) 99.99%

### Oxygen Presence

0.001% = 10ppm (parts per million)

### Temperature Range

-55° - 155°C

### Final Metal State

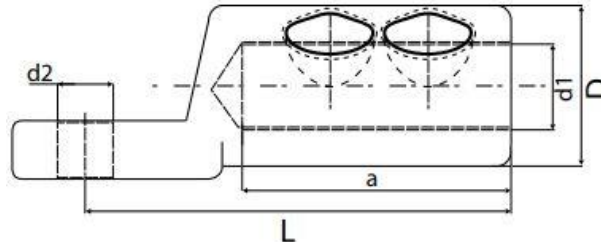
Fully annealed

### Standards and Compliance

AS/NZ 4325:1; EN 60998-1:2004

Heat Cycling test to AS/NZS 4325.1 and IEC 61238-1-1

Mechanical pulling test to AS/NZS 4325.1 and IEC 61238-1-1



Part Number	Nominal Cable size (mm <sup>2</sup> )	Stud size (mm)	Dimensions (mm)					Palm Width (mm)
			d2	d1	D	L	a	
UTSCL 16-95	16-95	M12	13	12.5	24	60	32	30
UTSCL 50-150	50-150	M12	13	15.5	30	79	35	30
UTSCL 50-150	50-150	M16	17	15.5	30	79	35	30
UTSCL 95-240	95-240	M12	13	20	33	95	56	33.5
UTSCL 95-240	95-240	M16	17	20	33	95	56	33.5
UTSCL 120-300	120-300	M12	13	25	38	100	67	37.5

Part Number	Nominal Cable size (mm <sup>2</sup> )	Stud size (mm)	Dimensions (mm)					Palm Width (mm)
			d2	d1	D	L	a	
UTSCL 120-300	120-300	M16	17	25	38	100	67	37.5
UTSCL 185-400	185-400	M12	13	25.5	42	137	80	40.2
UTSCL 185-400	185-400	M16	17	25.5	42	137	80	40.2
UTSCL 500-630	500-630	M12	13			150	95	50.3
UTSCL 500-630	500-630	M16	17			150	95	50.3

